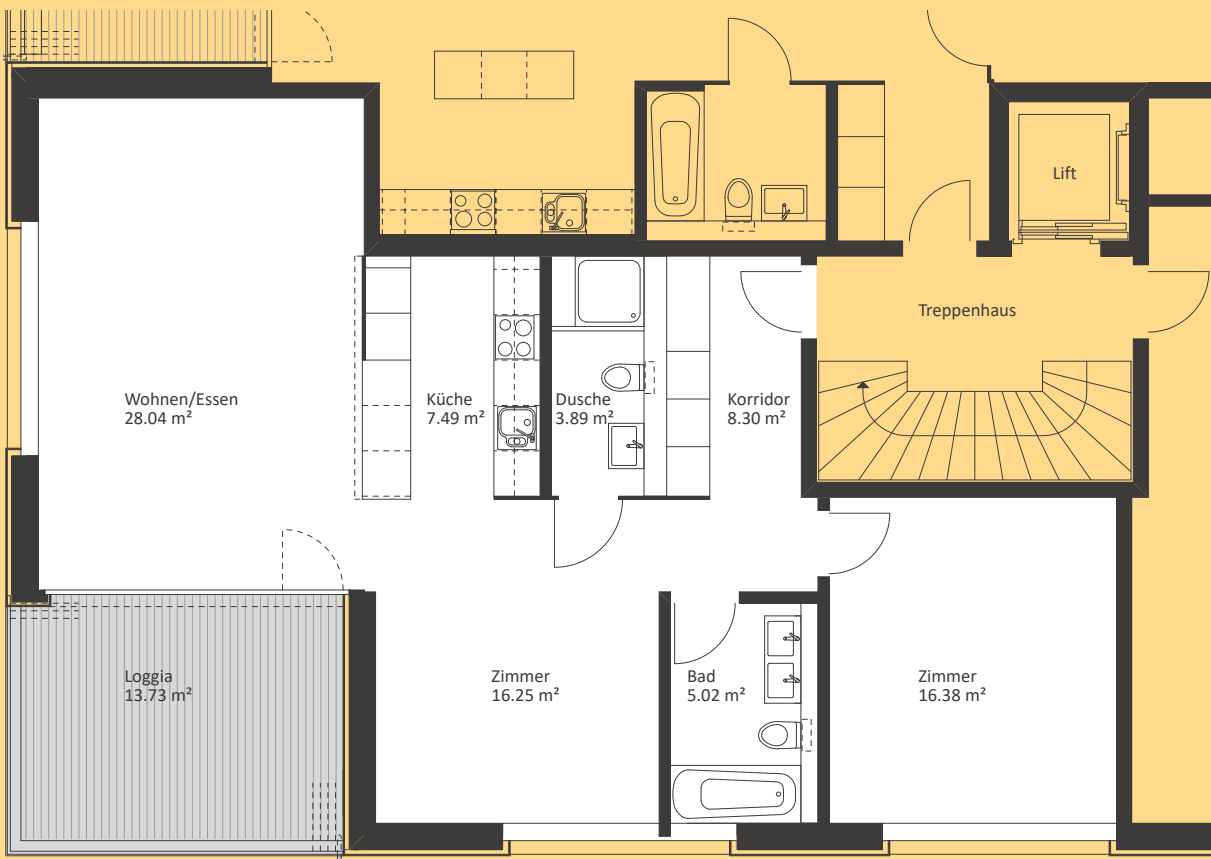


## 3 1/2-Zimmer-Wohnung offen/Typ 5

NGF: 88.90 m<sup>2</sup>

Loggia: 13.73 m<sup>2</sup>

	HAUS A	HAUS C	HAUS D	HAUS E
1. OG	6612	2712	2512	
2. OG	6622	2722	2522	2322



0 1 2 3 4 5 m  
M 1:100